

GT MINI



medical
systems

Reliable Temperature Monitoring Solution

to ensure the safety of temperature-sensitive specimens.

Key Features



Temperature Monitoring with high precision covering a wide range of temperature.



Data Accessibility through Mobile and Web Portal.



Customizable Settings for temperature thresholds, data collection frequency etc. to match your requirements.



Exportable Temperature Reports in XLS and PDF formats.



Access last **50 records** via mobile app



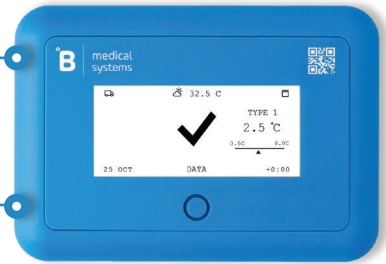
Access to **data history** via web portal



Data stored on GT Mini for **30 days**

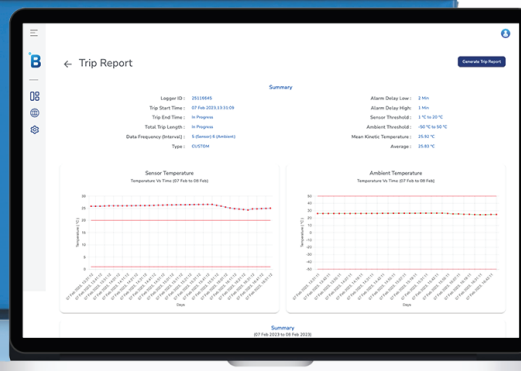
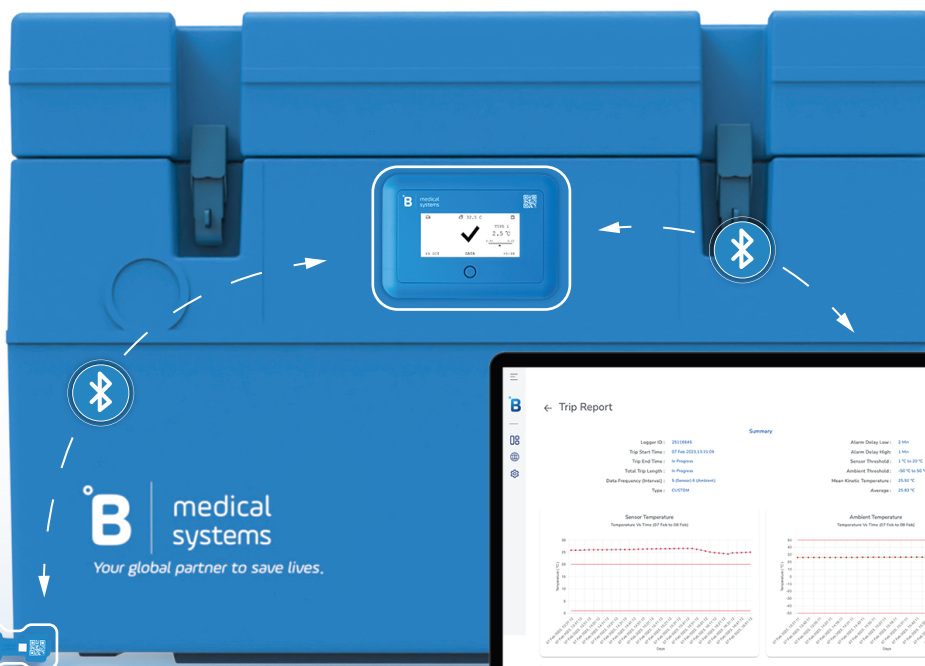
GT Mini
Installed on the
medical device

Operating
temperature range
-10°C to +60°C



TempSense 810
Placed inside the
medical device

Operating
temperature range
-20°C to +65°C



Multimode Operations and Access Levels to suit your needs



30-Day Mode



For stationary / long-delivery transports.



Trip Mode



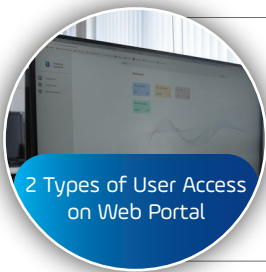
For quick transports / small sample transfers.



Warehouse Mode



A battery saver mode when the device is not in use.



Admin



Manage the units and viewers.



Viewer



Access or export information.

Key Specifications: GT Mini ✓

Operating temperature	-10°C to +60°C
Temperature sensor type	Digital
Temperature sensor accuracy	±0.1°C (maximum) from -20°C to +50°C ±0.15°C (maximum) from -40°C to +70°C
Screen type	E-ink display
Buzzer volume	75 dB
Connectivity technology	Bluetooth Low Energy (BLE)
Battery pack capacity	4000 mAh
Waterproofing protection	IP65

Key Specifications: TempSense 810 ✓

Operating temperature	-20°C to +65°C
Temperature sensor type	Digital
Temperature sensor accuracy	±0.1°C (maximum) from -20°C to +50°C ±0.15°C (maximum) from -40°C to +70°C
Battery cells	2
Battery capacity per cell	345 mAh
Waterproofing protection	IP67

SAVING LIVES THROUGH RELIABLE AND INNOVATIVE TECHNOLOGY

B Medical Systems S.à r.l

B Medical Systems is a global manufacturer and distributor of medical-grade devices with over 40 years of industrial experience.

Contact:

17, op der Hei, Hosingen L-9809, Luxembourg

Tel: +352 92 07 31 1 | Email: info@bmedicalsystems.com | www.bmedicalsystems.com

