

# Remote Temperature Monitoring Device (RTMD)

from B Medical Systems

REAL-TIME MONITORING

2G / 3G / GPS

REAL-TIME ALERTS

The cold chain is of paramount importance to the safe storage and transport of many biological components used in the pharmaceutical industry, in hospitals and other medical fields. This is because temperature plays a critical role in maintaining the integrity of vaccines, blood components and biological samples, and if these biologicals are not maintained at the intended temperature range, they can lose their potency and become ineffective.

The Remote Temperature Monitoring Device (RTMD) from B Medical Systems monitors the temperature inside the refrigerators and freezers and alerts you in real-time if the temperature goes outside the optimal range (Fig 1: RTMD connected to U line). These devices track various parameters and then stream the data attributes via a communication network. This data is then converted and shared via a cloud based portal for real time visibility of the performance of the units (Fig 2: Vaclog) at no extra installation cost.

The Remote Temperature Monitoring Device is preinstalled on all units at the factory. To activate the RTMD, follow our quick start guidelines for RTMDs.

## FEATURES

- Real time monitoring of temperature(s), lid / door openings & GPS position
- Real time alert via text messages or emails
- Worldwide remote monitoring & data access over WEB
- Google Maps positioning using integrated GPS module
- Includes a SIM chip with communication costs covered during the warranty period
- Rechargeable battery
- GSM network Coverage is necessary to operate



Fig 1: RTMD connected to U line



Fig 2: Vaclog

# CORE FUNCTIONALITY

**1. Real time access to temperature(s), lid / door openings & current GPS position:**  
by using the RTMD and the Vaclog, users can get real-time information about the internal unit temperature, ambient temperature (external), lid openings, battery levels of the logger, GPS position of the unit, and all the alarms associated with the products



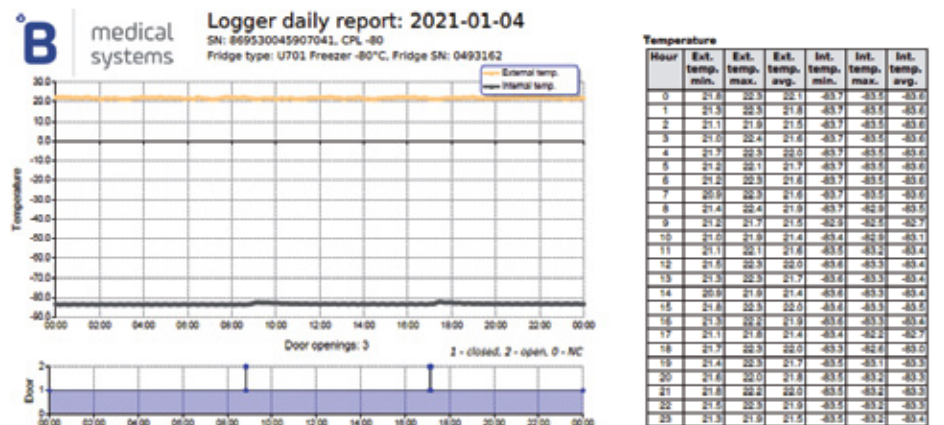
**2. Real time alert via text messages or emails:**  
the alarm can be forwarded to 3 different recipients in SMS or email format to pre-registered phone number or email IDs\*

Alarm recipients					
Priority	Channel	E-mail/Phone	Time zone	Language	Response time
1	SMS*	3521101010010	Europe/Brussels (+01:00)	English	5 min
2	E-mail	Emergency@lanlabsnetdg.com	Europe/Brussels (+01:00)	English	5 min
3	SMS*	1121221223	Europe/Brussels (+01:00)	English	5 min

\*) To acknowledge the alarm please visit web-portal or forward this SMS to number +3111111111 [WARNING! Costs may occur!]

\*For the phone number, country code should be included without (+) or (00). Special numbers (e.g. 112) do not work.

**3. Detailed report showing the internal / external temperature and the door openings**

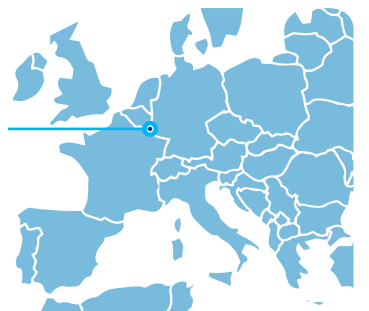


**B Medical Systems S.à r.l.**  
17, op der Hei, L - 9809 Hosingen, Luxembourg

Luxembourg, in the heart of Europe

Tel.: (+352) 92 07 31-1  
Fax: (+352) 92 07 31-300  
info@bmedicalsyste.ms.com

WE SUPPORT



[www.bmedicalsyste.ms.com](http://www.bmedicalsyste.ms.com)

B MEDICAL SYSTEMS; the "B" logo; Ultra SDD and Saving lives through reliable and innovative technology; are trademarks of B Medical Systems S.à r.l. | B Medical Systems products are protected by granted and pending patents and registered designs. All rights reserved. All indications without guarantee and excluding all liability due to faulty, incomplete or outdated information. All technical data subject to change without prior notice.

FL\_LUX\_MD\_RTMD\_EN\_ED072025